

The Els 1741 SQ.FT.



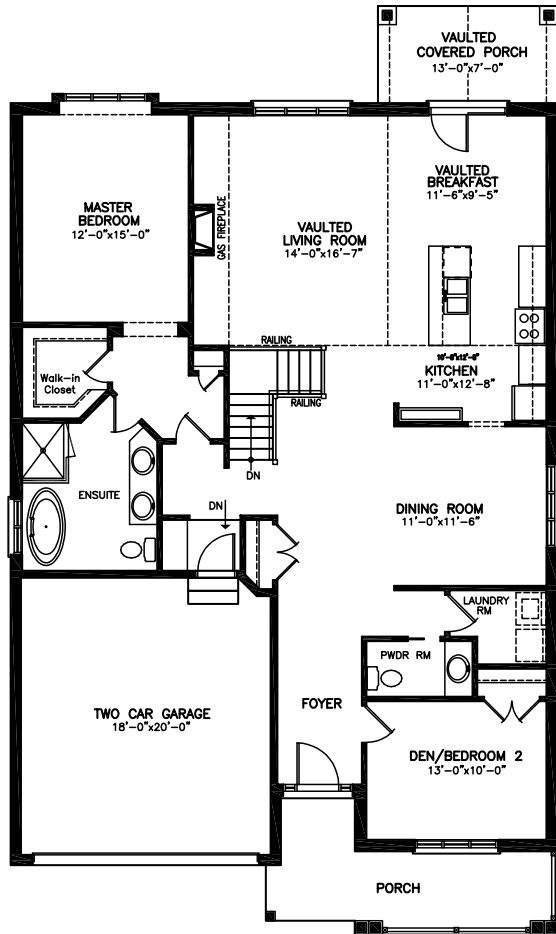
FRONT ELEVATION



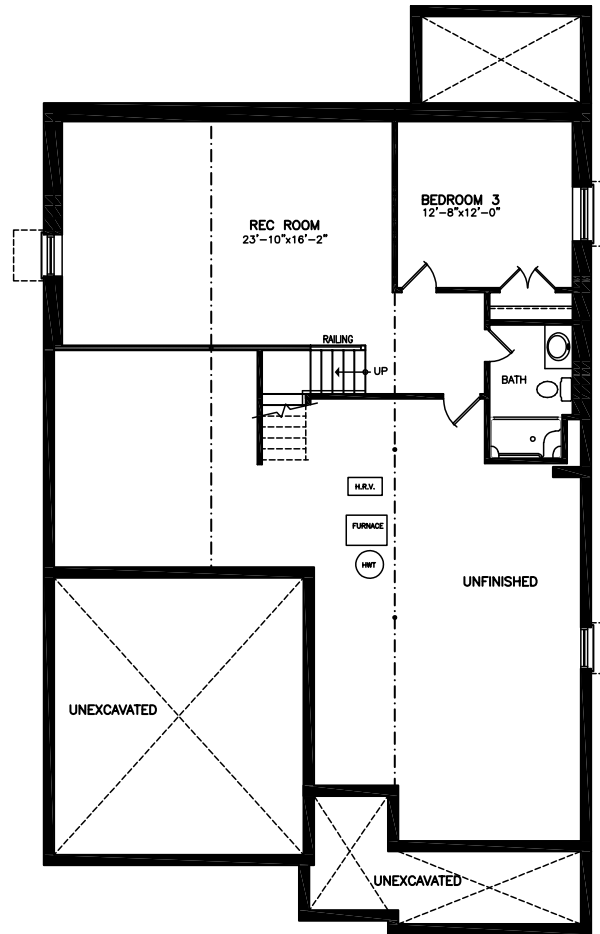
ELEVATION FACING WONDERLAND ROAD

Plan dimensions may vary slightly and changes may be made due to on site conditions.

The Els 1741 SQ.FT.



MAIN FLOOR PLAN—1741 sq.ft.



BASEMENT PLAN
FINISHED AREA = 819 SQ.FT.



Plan dimensions may vary slightly and changes may be made due to on site conditions.