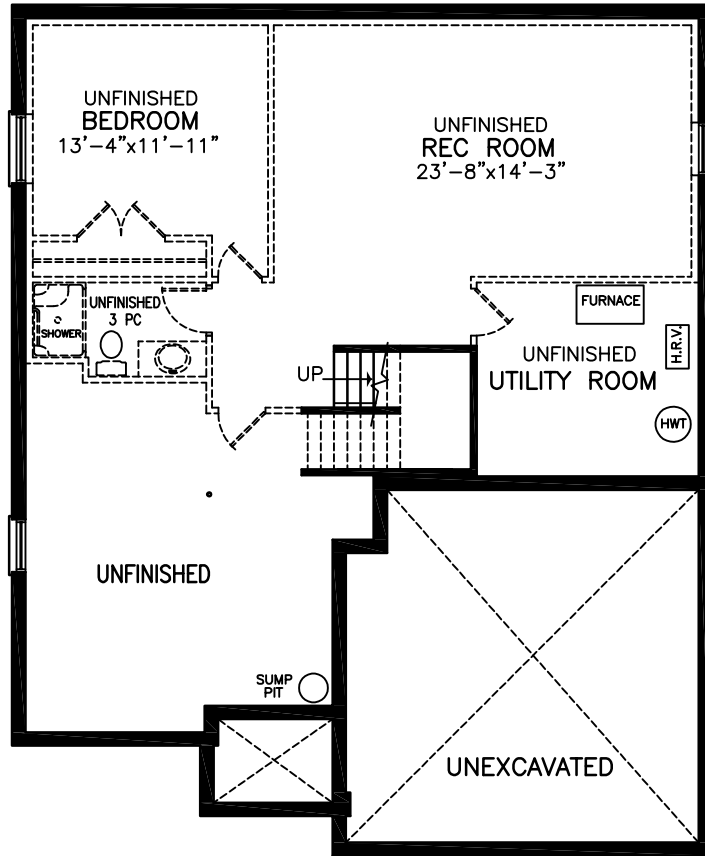


The Palm 2678 SQ.FT.

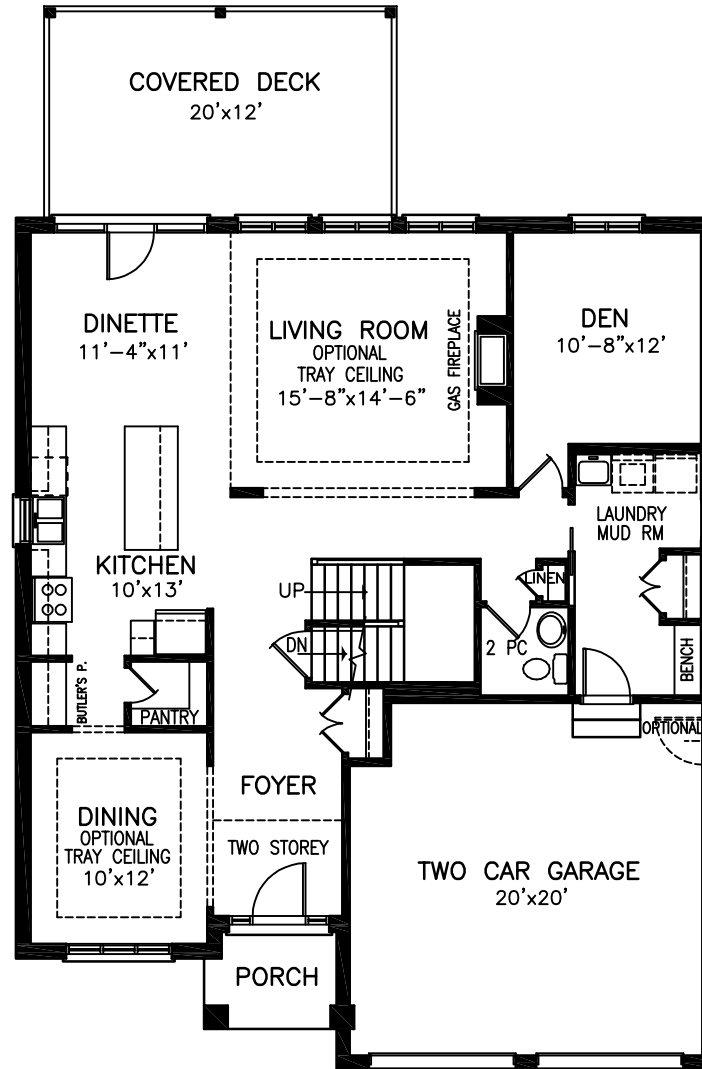


Plan dimensions may vary slightly and changes may be made due to on site conditions.

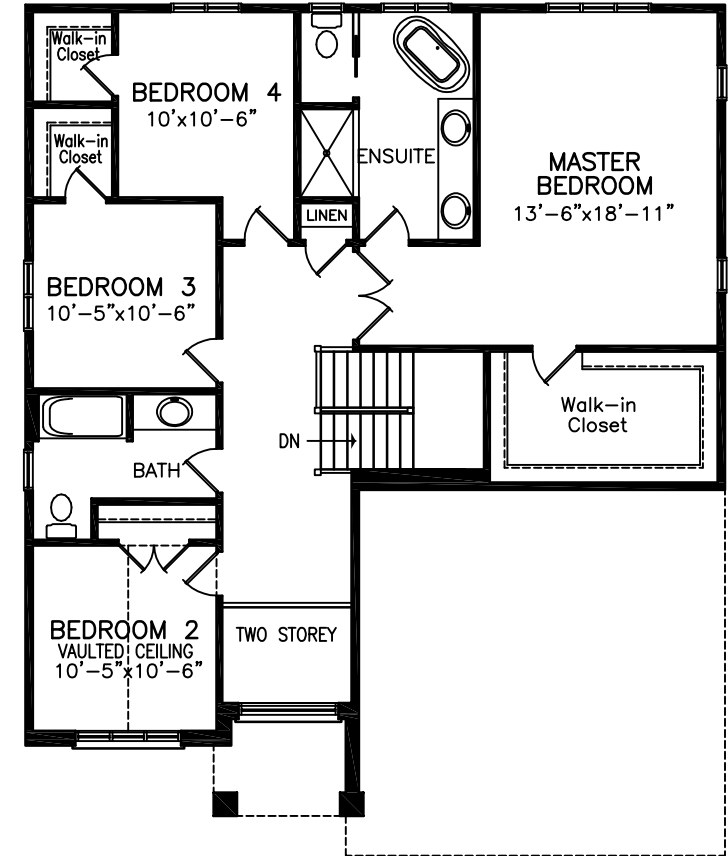
The Palm 2678 SQ.FT.



UNFINISHED BASEMENT PLAN
 OPTIONAL FINISHED AREA 830 SQ.FT.



MAIN FLOOR PLAN - 1363 sq.ft.



SECOND FLOOR PLAN - 1315 sq.ft.
 PLUS 40 SQ.FT. SPACE OPEN TO BELOW

Plan dimensions may vary slightly and changes may be made due to on site conditions.